

FOUNDATION OF VORTEX GRAVITATION, COSMOLOGY AND COSMOGONY

CH. Swpna, Ramulu

Assistant Professor, Assistant Professor
Department of Humanities and Science,
Samskruti College of Engineering and Technology, Ghatkesar

Abstract:

A theory is advanced in regards to the genesis of global gravity and the reason of its occurrence. This is due to a system of ether vortex rotations, which is the root reason. The physical and mathematical foundations are discussed, and the formula for determining the gravitational pull of space is determined. On The principles of formation and existence of celestial bodies, as well as the fundamentals of vortex gravity, are all discussed are depicted Proposed methods for using the vortex gravitational features for the purpose of space travel projection are put up as options.

INTRODUCTION

According to the proposed model of gravity, cosmology, and cosmogony, the initial cause of rotations in the Universe for all celestial objects or their systems is the vortex rotation (in corresponding space regions) of a gaseous cosmic-space medium, namely, the gaseous cosmic-space medium, which is a gaseous cosmic-space medium. ether. The rotation of the ether happens in accordance with the same rule that governs the rotation of a celestial body. In The solar system (torsion), the vortex-type ether rotation, and the rotation of the earth all have torsion characteristics. is synchronised with the orbits of the planets orbiting the Sun (the Kepler 3-rd law). The Torsion-like vortex ether rotation causes an alteration in ether pressure within the torsion in one direction. conforming to the principles of aerodynamics The pressure differential in the space medium is responsible for the formation of the The bodies positioned inside this medium are subjected to an expulsive force, and this force is directed toward them. the location of the torsion's centre The gravitational force itself serves as the expulsive force. The calculus of the expulsive (gravity) forces is carried out on the basis of the continuum mechanics of the body. & (or) aerodynamics, which makes use of the Navier-Stokes equations to get its results.

An example of this is shown in the current work. It is possible to get an algebraic formula for gravitational forces that does not include the term decrease. In the Newton formula, the gravitational constant is represented by coefficients. Some of the points made in the article are: Conclusions and foundations are provided, as well as fresh techniques of study for the subject matter under consideration. There are several qualities of the celestial bodies that are associated with the cosmic material, including: Universal vortex gravity has a discoid structure, which has been shown by several researchers. astronomical facts, such as the ellipsoidal planet orbits, for example. If one takes into consideration this characteristic of Because of gravity, an explanation for the inaccuracy of the popularly believed Universe may be provided. Equation of gravitation (Newtonian attraction). In addition, this allows for the calculation of a correction for the two-dimensional Newton's equation. On the basis of the three-dimensional formula for the derived, Following the calculation of the gravitational forces, the potential of planning cosmic voyages with a spacecraft arises. The usage of energy has been significantly reduced. (2) Using the theory of vortex gravitation as a foundation, physical models are created in this paper. In which various properties of cosmic objects, as well as the principles of creation of the universe, are discussed Universal material and celestial objects, Black

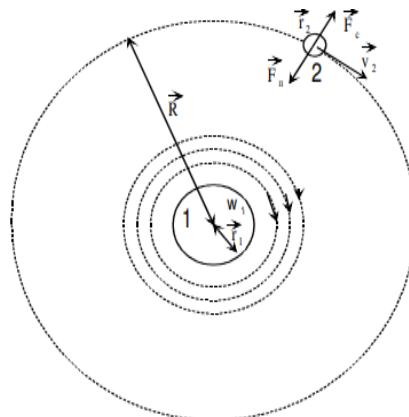
Holes, the nature of their motion, masses, and the passage of time are all discussed. Stars, planets, and the evolution of the entire Universe are all discussed.

3. Theoretical grounds for the increase in distance between galaxies are suggested, and these foundations are in reality confirmations of the shrinking of the Universe. Explained in detail using the physical model of vortex gravitation, the causes of ebbs and flows in the oceans are discussed in greater detail.

The concept of vortex gravitation is used to provide analytical explanations for a wide range of phenomena. It has been proposed that there are scientific paradoxes: - The Seliger paradox, the slowing of the Earth's rotational velocity, the existence of "dark matter," and so on. When compared to the Newtonian formula, there are many advantages to the suggested gravitational model. It consists in the fact that it determines the gravitational forces by using the well understood fundamental equations. Physical properties and laws are discussed. In the meanwhile, Newton's law is based only on experimental evidence, and facts that can be seen. Because of this, based on the vortex gravitation model, it looks that there is a chance to account for the gravitational nature of the force and devise technical techniques for an effect onto the surface of the gravitational pull. A large number of scholars have pointed out that the cosmic vortices play a crucial role in the evolution of the universe. Creation of new world substances. They were known as Empedocles, Leucippus, Democritus, and other names in the ancient world. Aristotle and a few other thinkers. This concept was created during the Renaissance by R. Descartes, J. Descartes, and others. MacCullagh, J. J. Thomson, and W. Thomson are three of the most prominent scientists in the world (Lord Kelvin). It should be mentioned that they were the times. There was no established science in the field of continuum at the time. Mathematics and physics, on the other hand, were not even so, the works of Bernoulli, Euler, Navier, Stoke, and others have been added to the mix. As a result of the above, the scientists that were named were unable to articulate their theories in a physical and mathematical manner, and their conclusions did not deviate much from pure philosophical thoughts. During the twentieth century, the substance "ether" was arbitrarily withdrawn from scientific research, as if it were being considered illegally. Because it was considered "pseudo-scientific," the hypothesis of space ether vortices was unable to progress for many years. Years have passed. In this essay, we will show a plethora of evidence for the presence of vortices in nature. It has enough evidence to be considered a working hypothesis or a theory of gravity. The evidences are as follows: offered for consideration throughout the remainder of the text below

2.1. MODEL OF THE ORIGIN OF THE UNIVERSAL GRAVITATION FORCE

In this section, a model of appearance of the gravitation attraction force is considered from the viewpoint of aerodynamics. Namely, the two-dimensional model (Fig.1) is considered on the basis of the following initial postulates. These postulates will be expanded and defined more exactly below.



1. Any physical thing is surrounded by an ether vortex, which may be seen. It is also worth noting that the ether motion in the vortex is of a laminar nature and follows the laws of hydro- or aerodynamics, and that its viscosity is low.

3. The pressure differential that develops during the vortex motion of the ether gas is the cause of the anode failure.

Body 1 is attracted to body 2 by an attractive force (see Fig.1).

(4) The force F does not have a direction that is dependent on the direction of the ether angular velocity, and this is required for the attraction between the bodies, regardless of their relative positions. This suggests the lack of the Magnus force — the force of interaction between the two — in the relationship. Vortices are a kind of vortex that arises in classical aerodynamics. An assumption of this kind may occur at any time. There is little contact between the two ether flows, as if they were trying to transfer one via the other. Having an impact on mutual motion.

5. The gravitational attraction force that appears must describe the law of gravity that has been empirically discovered:

$$F_g = G \cdot \frac{m_1 \cdot m_2}{r^2} \quad (1)$$

$$\rho \left[\frac{\partial}{\partial t} + \vec{v} \cdot \text{grad} \right] \vec{v} = \vec{F} - \text{grad } P + \eta \Delta \vec{v} \quad (2)$$

where ρ is the ether density, \vec{v} and P are, respectively, its velocity and pressure, and η - the ether viscosity. In cylindrical coordinates, taking into account the radial symmetry $v_r = v_z = 0$, $v_\varphi = v(r)$, $P = P(r)$, the equation can be written as the system:

$$\begin{cases} -\frac{v(r)^2}{r} = -\frac{1}{\rho} \frac{dP}{dr} \\ \eta \left(\frac{\partial^2 v(r)}{\partial r^2} + \frac{\partial v(r)}{r \partial r} - \frac{v(r)}{r^2} \right) = 0 \end{cases} \quad (3)$$

2.2. SPATIAL MODEL OF GRAVITATION

It is necessary to determine the space ether torsion configuration in order to solve the posed problem of calculations of the forces of vortex gravitation in order to resolve the forces of vortex gravitation problem. Because of the extremely low ether density, it is impossible to investigate the ether using direct methods. However, because (on the one hand) (See Section 3 for more information on the ether cosmogony.) The ether is responsible for the formation of celestial bodies. transfers to them the momentum of their movement, it becomes possible to determine the character of the person. as well as its construction employing the heavenly objects' shapes and characters' appearances. as a result of their migration. Because the diameter and thickness of the vortex are the most important properties of its form, the primary goal is to reduce the diameter and thickness of the vortex. It is only necessary to identify these two factors as part of the inquiry into the torsion configuration. The size of the

torsion diameter is quite obvious, and it is equal to the diameter of the corresponding sphere of glass. The solar system is referred to as the cosmic system. The latter is defined by the orbits of the satellites of this constellation that are the farthest distant. torsion. At the same time, vortex-like ether rotations occur in cosmic space as some of the atoms in the universe are rearranged. discoid media with a minimal (very thin) layer thickness. On the basis of well-known astronomical facts, this suggestion has been made.

Because all celestial objects have spherical or ellipsoidal forms, the gathering of celestial objects is easier. It is necessary that an image of the cosmos as a sphere (under the influence of the vortex gravity) be created. When a vortex ether flow is generated, its active axis thickness must be smaller than the diameter of the created body. The idea is that if the ether rotated as a "rotor" with a considerable axis thickness, then such a rotation would be possible. The gravitational field would be produced by a rotor with a cylindrical design. In this particular instance, the cosmic materials indrawn by this torsion would have the same cylindrical shape. As a result of this, if the cylindrical forms of celestial objects are not noticed, then the conclusion is self-evident; otherwise, specifically, the ether revolution takes on the shape of a "thin" revolving disc. When comparing the value of the diameter of any celestial object with the value of the diameter of the sun, it goes without saying that the diameter of an item is proportional to its location in space (solar, planetary). relatively little when compared to the system diameter, and as a result, a vortex "cuts up" or "cutting up" the system. By use of a layer with an equally negligibly thin thickness, cosmic space is enclosed. There is a constant circulation in all celestial object systems (galaxies, solar systems, and satellites, for example). around a centre on a unique orbital plane with a slight inclination, revolving around a centre

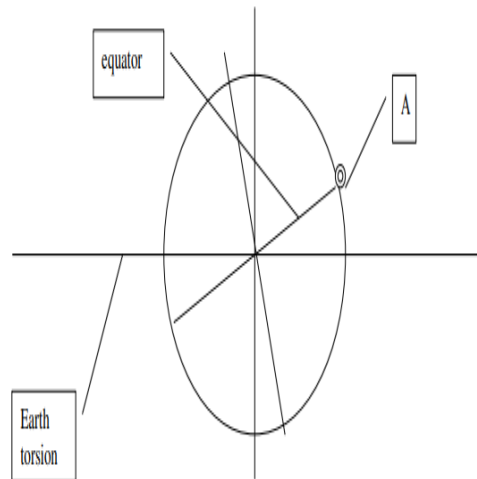
3. FINAL RESULTS AND RECOMMENDATIONS

The model of universal vortex gravity specifies completely new principles of the genesis and existence of the universe's material, as well as the nature of the cosmos itself. The calculations and findings presented below do not purport to be exhaustive or precise in every case. The most important thing to remember is that The goal of Section 3 is to give evidence for the presence of a vortex nature to gravitational forces in the universe forces with its discoid shape, as well as to demonstrate the application possibilities of the model of forces. The use of vortex gravitation for the investigation of several cosmological phenomena is a fundamentally novel concept. Any Specialists can independently devise methods and procedures for performing calculations and investigations on a variety of topics. the fundamental principle of vortex gravitation

4. CAUSES OF EBBS AND FLOWS

Knowing that the sea ebbs and flows twice every 24 hours and 50 minutes may be explained by the effect of the Moon and Sun's gravity fields, as well as by centrifugal forces, is a common knowledge (Galileo, Descartes, Newton and others). Due to the fact that the Moon and Sun are only at zenith under one Earth surface point once a day (or once every 24 hours), Even if they worked for the same amount of time (50 minutes), they would not be able to have the same amount of effect on this issue. Gravitation is performed twice a day. An alternative explanation for this is provided by the model of vortex gravitation. The following are the characteristics of the phenomena. In accordance with the vortex gravitation, the discoid shape of the Earth's gravitational torsion has been determined. plane-symmetrical. Its general direction coincides with the Moon's orbit plane, which is inclined to the Earth's equator. the ecliptic is at 5 degrees and 9 minutes latitude. Meanwhile, the Earth's equator plane is inclined with respect to the Sun. The ecliptic is 23.7 degrees long. The Moon's compression coefficient, often known as the cosine of the Moon's orbit, The inclination is 0.9985 degrees. In other words, the Moon's orbit is 3 degrees incline with respect to the Earth's torsion. as well as 6 minutes (Section 3.4, formula 1) A geometrical comparison of these inclinations

demonstrates that each point on the Earth's surface spins at a significant angle in relation to the Earth's gravitational field. The torsion plane is a plane of rotation. As a result, the Earth's surface is intersected by the Sun at the same spot every time. gravitational torsion in the opposite direction, or it approaches and then travels away from the source of gravitational torsion. The vortex's tensile strength. The gravitational pull of the Earth acting on this point affects the situation in this example. in accordance with (see Fig. 8).



As it moves about the Earth's centre on a daily basis, Point A must cross the Earth's torsion central plane twice, and it must also move away from it on the same two occasions. As a result, the Earth's gravitational forces exert their greatest influence on point A twice daily, and they exert their least influence on point A twice daily as well. Twice a day is plenty. This has a physical impact on the Earth's surface as well as the amount of water in the atmosphere point. It is because of this that the ebbs and flows occur twice a day at a certain location. As previously stated in Section 3.5, geodetic gravimetry has been used to establish that the Earth is rotating. When compared to the theoretical value, the gravitational force near the poles is 0.43 percent less powerful than the theoretical value calculation. This confirms the previously observed non-uniform gravitational force on the Earth's surface, which was previously noted. As is well known, the gravitational pull of the sun on the Earth's orbit is 0.06 percent of the gravitational pull of our planet. planet with its own land surface. The Moon has an effect on the Earth's surface because of the pull force it has. The gravitational pull of the Earth is 0.0003 percent of its total gravitational pull. When these values are compared, it is clear that the Earth's gravitational field is changing in a wave-like fashion. At the Earth's surface, forces under the action of the planet's own rotation occur at a much higher rate than at the centre intensity than the same change in Earth's gravitational field under the influence of the gravitational field of the Sun. The Sun and the Moon are rotating in the same direction. It should be highlighted that a persistent wave-like alteration in the environment is possible. The strength of the gravitational field in the Earth's surface layers might be a significant trigger for the emergence of life on the planet. The tectonic movements of the earth's crust plates and seismicity are becoming more intense. Furthermore, the cyclic change of. When doing precision inquiry, it is important to consider the gravitational force at a single place. manufacturing in medicine and other natural sciences fields, including the registration of sports records.

CONCLUSION

It should go without saying that the principles of vortex gravitation and cosmogony presented above are based on widely accepted fundamental physical laws of nature. The classical law of universal gravitation, on the other hand, is based solely on the fact that centrifugal forces are equal in all directions. F_c and gravitational forces are two types of forces. The following are examples of simple mathematical transformations that can be used to support further calculations: $F_g \cdot V = R^{-2}$ is substituted into the equation $F_g = F_c = mv^2$ to obtain the proportionality $V = R^{-2} / R$ from the 3rd position. As a result of Kepler's law, it can be determined that $F_g \propto m / R^2$. Kathmandu University Journal of Science, Engineering, and Technology is a peer-reviewed journal that publishes original research in the fields of science, engineering, and technology.

The hypothesis advanced by I. Newton in order to convert this ratio into a formula was that all the variables were equal. The gravitational attraction between bodies was a force proportional to the mass of the bodies. These hordes of people were. The gravitational constant was "introduced" in order to comply with the "prescribed" by a method of selection. that these masses were correct; it turned out that it was necessary to give an absurd unity to this group of people. $N \cdot m^2$ is a constant. / kilogrammes (kg^2)

It is well known that Newton himself was unsure about the gravitational qualities of physical entities, and he was also unsure about the nature of the universe. Later, he proposed that the density shift of cosmic material (ether) may be the root cause of the phenomenon gravitation. However, no convincing reason for a reduction in this density has been offered thus far. Huygens was well-known for declaring Newton's hypothesis of the gravitational properties of bodies to be incorrect and ridiculous. A. Einstein's theory of relativity is based on the principle of relativity, which allows for more precise calculations. Gravitational forces are calculated based on the fundamental principles of Isaac Newton, namely the central symmetrical action of gravity forces and the gravitational properties of celestial objects. According to Newton's equation, the gravitational forces from any celestial object extend over a large area of space infinite distances between objects, and because the number of these objects is also infinite, classical theories of distance are also infinite. The Seliger paradox is a paradox that occurs when gravitation and physics collide. That is to say, under these circumstances, everything infinite gravitational forces would fill the whole universe, filling it to its maximum capacity. The vortex gravitational field model. This paradox is resolved because the gravitational action is limited by the size of the torsion. Furthermore, on the basis of the classical theories discussed above, it is impossible to comprehend the phenomenon. The underlying cause of the formation and motion of celestial objects. It is well recognised that there is a discordance throughout the world. Modern science has discovered the speed of gravitational attraction. According to classical physics, the speed of light is. Gravitation has an infinite range. Gravitational acceleration is equivalent to the speed of light according to relativistic theories. Light travels at the speed of light. As a result of the vortex cosmology, gravitation is unquestionably an unavoidable property. Torsion is a property that can be found in any torsion. As a result, the speed of gravitational attraction is the same as the speed of light.

The occurrence of a cosmic torsion is noted. It should be noted that a large number of researchers advanced, and are still advancing, the hypothesis over time depending on the gravitational qualities of the ether. However, nobody has yet presented a physical and logical solution. The mathematical underpinnings of the relationship between ether motion and the change in density of the ether as well as the methodology used in its calculation.

REFERENCES

1. Atsurovskiy, V. A. 1990. General ether-dynamics. Energoatomizdat. Moscow, Russia. Page 278.
2. Kiknadze, L. V. Yu. G. Mamaladze, 1979. Classical hydrodynamics for physicistsexperimentalists. Tbilisi University Press. Tbilisi, Georgia. Page 136.
3. Babichev, A. P., N. A. Babushkina 1991. Physical constants Handbook. Energoatomizdat. Moscow, Russia. Page 1232.
4. Kadyrov C. K , 2001. Physical Theory of Unified Field. Kyrgyz zer. Bishkek, Kyrgyzstan. Page 33.
5. Gulyaev, A. P. 1993 Astronomy calendar. Cosmosinform. Moscow, Russia. Page 285.