

Pulp Stones, The Risk Predictors for Coronary Artery Disease (CAD): An Original Research Article

¹Dr. Puttaraj T. Kattimani, ²Dr. Banibrata Lahiri, ³Dr. M. Aarti Rajambigai, ⁴Dr. Maneesha Das, ⁵Dr. Mubashir Baig Mirza, ⁶Dr. Gautam Singh, ⁷Dr. Abhishek Singh Nayyar

¹Department of Prosthodontics and Crown and Bridge, SB Patil Dental College and Hospital, Bidar, Karnataka, India

²Department of Oral and Maxillofacial Surgery, Kalinga Institute of Dental Sciences, Bhubaneswar, Orissa, India

³Department of Prosthodontics and Crown and Bridge, Rajas Dental College and Hospital, Kavalkinaru, Tirunelveli, Tamil Nadu, India

⁴Department of Conservative Dentistry and Endodontics, Saraswati Dhanwantari Dental College and Hospital and Post-graduate Research Institute, Parbhani, Maharashtra, India

⁵Department of Conservative Dental Sciences, College of Dentistry, Prince Sattam bin Abdulaziz University, Al-Kharj, Saudi Arabia

⁶Department of Conservative Dental Sciences, Ibn Sina National College for Medical Studies, Jeddah, Kingdom of Saudi Arabia

⁷Department of Oral Medicine and Radiology, Saraswati Dhanwantari Dental College and Hospital and Post-graduate Research Institute, Parbhani, Maharashtra, India

Corresponding Author: Dr. Puttaraj T. Kattimani

Department of Prosthodontics and Crown and Bridge, SB Patil Dental College and Hospital, Bidar, Karnataka, India

E-mail address: kputtarajt@gmail.com

ABSTRACT

Context and Aim: Coronary artery disease (CAD) has been recorded as the leading cause of morbidity and mortality worldwide. Studies indicate that patients with CAD show higher degree of pulp calcifications. Localized pulp calcifications are microscopically apparent in more than half of the teeth in young adolescents. However, pulp stones extending to the entire dentition are infrequent and need further evaluation to predict the risk of other probabilities of associated diseases. The present study was planned to estimate the prevalence of pulp stones in patients diagnosed with or, undergoing treatment for CAD.

Materials and Methods: The present study consisted of 300 subjects within an age range of 20-55 years who were divided into the study group consisting of 150 patients including 108 males and 42 females and 150 age and sex-matched healthy controls. Pulp stones were imaged using bitewing radiographs using paralleling technique under standard conditions. The radiographs were interpreted separately by two experienced radiologists.

Statistical Analysis Used: The statistical analysis was performed using IBM SPSS statistics 20 Core system software (SPSS Inc., Chicago, IL, USA) while statistical tests used were unpaired t-test and Z test. Chi-square test was used to check the prevalence of pulp stones in patients with CAD in addition to their arch wise and region wise distribution while p-value less than 0.05 was considered statistically significant.

Results: CAD patients exhibited 100% prevalence of pulp stones while posterior teeth were predominantly affected ($p < 0.05$). Furthermore, pulp stones were significantly higher in the maxilla than in the mandible in both the groups ($p < 0.05$). No significant difference was found in gender predilection in the study group, although, the control group showed a definite preponderance for the males for development of pulp stones ($p < 0.05$).

Conclusion: CAD patients have high chance of being affected with pulp stones. Higher prevalence of this entity in multiple teeth may warrant such an individual, in the presence of other compounding risk factors, as a candidate for CAD to be ruled-out.

Keywords: Pulp Stones, Risk Predictors, Coronary artery disease

Correspondence:

Puttaraj T. Kattimani

Department of Prosthodontics and Crown and Bridge, SB Patil Dental College and Hospital

Bidar, Karnataka, India

E-mail Address: kputtarajt@gmail.com

Submitted: 30-04-2020

Revision: 30-05-2020

Accepted Date: 30-06-2020

DOI: 10.31838/jcdr.2020.11.02.36

INTRODUCTION

Coronary artery disease (CAD) is caused by atherosclerosis of the coronary arteries leading to a reduction in blood flow to the heart. It is one of the leading causes of death worldwide.^{1,2} The paucity of data, along with a wide range in ethnicity, compounds the challenge of obtaining pure data from India regarding the prevalence of CAD. Ischemic heart diseases (IHDs) which ranked fifth as the cause of mortality in the 1990 has been proposed as they would be leading cause of mortality in the 2020. This shows the significance this set of diseases carries demanding a comprehensive revision of the preventive and treatment programs to put a check on the leading cause of morbidity in the future.³ Zachariah G et al.² reported that 11% of population in urban India and 7% in rural parts are afflicted by this disease. Pulp stones or, denticles are nodular, calcified masses appearing within the pulp of the healthy, diseased and even the unerupted teeth. They may exist freely within the pulp tissue or, be attached to or, embedded in dentin.⁴ Various

theories regarding the etiological factors behind the occurrence of pulp stones have been put forth including age, genetic susceptibility, pulpal degeneration, circulatory disturbances in the pulp, inductive interaction between the pulpal tissue and the epithelium and orthodontic tooth movements apart from a plethora of other factors and the unidentified, idiopathic ones.⁵

Osteopontin, a new constituent of atherosclerotic plaque, apparently plays a role in plaque calcification. Just as osteopontin produced by macrophages plays the chief role in the production of calcification centers within the necrotic areas of the various body tissues including the necrotic areas of breast cancer-affected tissues, calcifications have been observed in renal and carotid arteries as well.⁶⁻⁸

Kajander EO et al.⁹ and Ciftcioglu N et al.¹⁰ stated that nanobacteria are known to produce biologic apatite over their cellular covering which is similar to renal calculi and calcified tissues leading to a hypothesis that this might be

explained as a common factor between both pulp stones and the atheromatous plaques seen in CAD.

Coronary artery disease (CAD) has been recorded as the leading cause of morbidity and mortality worldwide. Arteriosclerosis is the most common cause of CAD and IHDs including angina pectoris, myocardial infarction and also, cerebrovascular diseases as stroke and peripheral artery diseases.¹¹ Therefore, finding a method for an early diagnosis of IHDs before the actual development of a clinical disease becomes all the more important. Numerous studies have shown association between the formation of pulp stones and atheromatous plaques in the vessels.¹²⁻¹⁵ The mechanism of apatite formation in the body, also, called as pathological bio-mineralization, is, also, hypothesized to be similar to dental pulp stone formation just like joint calcifications and renal calculi.¹⁶

Studies indicate that patients with CAD show higher degree of pulp calcifications.^{17,18} Localized pulp calcifications are microscopically apparent in more than half of the teeth in young adolescents. However, pulp stones extending to the entire dentition are infrequent and need further evaluation to predict the risk of other probabilities of associated diseases.¹⁹ The present study was, therefore, planned to estimate the prevalence of pulp stones in patients diagnosed with or, undergoing treatment for CAD.

MATERIAL AND METHODS

The present study consisted of 300 subjects within an age range of 20-55 years who were divided into 2 groups, the study group and the control group, with the study group consisting of 150 patients including 108 males and 42 females and the control group comprising of 150 age and sex-matched healthy controls. The control group consisted of subjects in whom CAD was ruled-out on the basis of the absence of associated signs and symptoms, risk factors (family history, central obesity) and related investigations including Electrocardiogram (ECG) and Treadmill test (TMT). The patients who were either recently diagnosed with or, under treatment for CAD and having at least one fully erupted, non-carious, non-restored molar (excluding third molars) were included in the study. The patients who had a known history of gout and renal disorders or, who were under treatment for the same, those who were suffering from syndromes having pulp stones as one of the known criteria including Ehler's-Danlos syndrome, pregnant females and those who were undergoing or, had radiotherapy treatment in the past were excluded from the study because of an obvious possibility of increased pulp stones in such conditions. Ethical approval was obtained from the Institutional Ethics Committees before the start of the study. Pulp stones were imaged using bitewing radiographs (Figure 1) (conventional radiography) using paralleling technique under standard conditions. Bitewing radiography was used to have both the maxillary and mandibular teeth in single images which eased the comparison as well as reduced the number of exposures that would have been required if intra-oral peri-apical (IOPA) radiography would have been used. Paralleling technique was used because of its reproducibility as well as the ideal imaging obtained without there being the possibility of

errors introduced due to variations in angulations affecting the length and the proximal overlaps of the images as seen with the bisecting angle technique which is the other commoner technique used for intra-oral peri-apical (IOPA) radiography. The equipment used for taking radiographs was Gnatus IOPA Unit (Medico-Odontologicos Ltd., Brazil) with MC4 master control at 70KVp tube voltage and 7mA tube current with a round collimator and long cone with 1mm of external and around 3.81mm of total filtration. The radiographic films used were Kodak E-speed, size 2 films (31mm into 41mm). An XCP-RINN-Greene Stabe disposable film holder was used for taking bitewing radiographs. The radiographs were interpreted separately by two experienced radiologists who inspected them independently in the dark room using a magnifying glass, a light emitting device (LED) view box with sufficient light source and with complete blockage of peripheral light. Pulp stones evident in teeth were characterized as complete radiopaque masses and were marked as either present or, absent. Both the radiologists had the same opinion 93% of times whereas in the rest 7% of the cases, variation was ruled-out after a joint discussion.

Statistical Analysis Used: The results obtained were tabulated and subjected to statistical analysis. The statistical analysis was performed using IBM SPSS statistics 20 Core system software (SPSS Inc., Chicago, IL, USA) while statistical tests used were unpaired t-test and Z test. Chi-square test was used to check the prevalence of pulp stones in patients with CAD in addition to their arch wise and region wise distribution while p-value less than 0.05 was considered statistically significant.

RESULTS

The present study revealed 100% prevalence of pulp stones in the study group while 90% of the subjects in the control group were, also, afflicted with pulp stones, though, the total number of pulp calcifications observed were lesser in number in the control group as compared to the study group with the total number of pulp stones observed in the control group being 639 as against 2217 pulp stones that were observed in the study group and the results were found to be statistically significant ($p < 0.05$). No difference was found, although, in gender predilection in the study group while the control group revealed a statistically significant predilection for the males with around 96.24% of the males afflicted with pulp stones as against 88.88% prevalence observed in the females ($p < 0.05$). Furthermore, maxillary teeth had a statistically significant predilection for the development of pulp stones in both the study as well as the control groups with 51.92% of the maxillary teeth afflicted with pulp stoned as against 48.08% of the mandibular teeth in the study group while 58.37% of the maxillary teeth as against 41.63% of the mandibular teeth in the control group ($p < 0.05$). (Table 1) Also, the prevalence of pulp stones in both the groups was found to be more in the posterior than in the anterior teeth with around 87.42% of posterior teeth afflicted with pulp stones in the study group as against 12.58% of the anterior teeth. Similarly, in the control group, the corresponding values were 85.92% in case of posterior while 14.08% in case of anterior teeth ($p < 0.05$). (Table 2)

The results in relation to the predilection for the side of the jaw affected were, though, found to be statistically insignificant in the present study ($p > 0.05$). (Table 3)

DISCUSSION

Pulp stones vary in size ranging from microscopic particles to larger masses that almost completely obliterate the pulp chamber. Amongst them, only the larger pulp stones are radiographically apparent while those which are either small in size or, relatively less calcified and in the initial stages of calcification are not routinely detected by the conventional radiological procedures of diagnostics.⁸ Various and more commoner syndromes that are associated with generalized formation of pulp stones include the so-recognized Elfin-Facies syndrome, Ehlers-Danlos syndrome Type I and Saethre Chotzen syndrome to name a few in addition to the oto-dental syndrome tumoral calcinosis, dentin dysplasia Type II, familial expansile osteolysis and osteogenesis imperfecta Type I.²⁰

Urbanization might have improved the living standards of the people but studies, also, show increase in the risks of morbidity and mortality associated with the cardiovascular diseases (CVDs) being one of the leading causes of morbidity and mortality in the present scenario. The risk factors might vary from region to region underlying the significance of administrative and research units to be increased in impetus in sampling methodology so as to obtain a unified report for the country. Active participation from various levels of health care can insure a robust data on the prevalence of CAD in India.

Cardiologists have confirmed the role of calcium phosphate crystals in generating inflammation within the arteries and also, playing a major role in acute myocardial infarctions (MIs) leading to sudden death of patients.¹⁶ The base of all calcifications including joint calcifications, renal calculi, atherosclerotic plaques as well as pulp stones is made up of calcium phosphate crystals which elicit an acute immunological response and the eventual sequel leading to widespread morbidity and mortality.

Zeng J et al.²¹ elaborated that calcifying nanoparticles (CNPs), also, called nanobacteria, probably pave the way to an explanation for pathological calcifications since they have been documented in the blood and blood products. The production of nucleate hydroxyapatite crystals by CNPs has been put forth as a key factor of these pathological calcifications seen in gall stones, joint calcifications, renal calculi, atherosclerotic plaques and pulp stones. Furthermore, they concluded that two different peculiarities of CNPs described as concentric circles and satellite-like aggregations eventually turn-out into such pathological calcifications seen.

Most of the prevalence studies have identified pulp stones using radiographic criteria in concordance with the one used in the present study. In the present study, it was found that pulp stones were prevalent in 100% of the patients with CAD. Nayak M et al.¹⁵ recorded pulp stones in 15.86% of teeth in patients with known systemic diseases, primarily, the cardiovascular diseases (CVDs). Ezoddini-Ardakani F et al.⁶ concluded that 67.3% of the teeth in patients with ischemic heart diseases (IHDs) had pulp stones. Edds AC et

al.¹³, too, reported 74% of the patients with pulp stones in IHD patients. Khojastepour L et al.¹⁴ reported 68.2% of the patients with known cardiovascular diseases (CVDs) and 28.2% of subjects without CVD having pulp stones.

Contrary to the findings of the said studies, Hill TJ²⁰ stated that, of the subjects examined between 50-70 years, 66% exhibited pulp stones without known evidence or, history of other systemic diseases similar to the study conducted by Khojastepour L et al.¹⁴. Ravanshad S et al.⁵ reported pulp stones in 46.9% in adult Iranian population. Also, another study conducted by Al-Hadi Hamasha A and Darwazeh A²², amongst Jordanian adults, reported a lesser prevalence with 22% of the teeth examined having pulp stones. Ranjitkar S et al.²³ stated, on the contrary, the prevalence of pulp calcifications in the Australian students to be 100% in accordance with the results of the present study which, also, observed 90% of the subjects in the control group to be afflicted with pulp stones, though, the total number of pulp calcifications observed were lesser in number in the control group as compared to the study group with the total number of pulp stones observed in the control group being 639 as against 2217 pulp stones that were observed in the study group. Tamse A et al.²⁴ used both peri-apical and bitewing radiographs and found 20.7% of the teeth afflicted with pulp stones.

The study group, in the present study, also, showed an equal predisposition for both the sexes for the development of pulp stones. This collation of data on the prevalence of pulp stones, with its varying rates in subjects in different age groups, underlying systemic status, sex and using different radiographic techniques underlines the scantiness in the literature available in relation to the different types of population, region-as well as ethnicity-wise.

Furthermore, both the groups in the present study showed a higher prevalence of pulp stones wherein another notable finding was that in relation to the maxillary teeth which seemed to have a definite predilection towards the development of pulp stones. The results of the present study revealed 51.92% of maxillary teeth to be afflicted with pulp stones as against 48.08% of the mandibular teeth in the study group. On the contrary, 58.37% of the maxillary teeth were found with pulp stones as against 41.63% of the mandibular teeth in the control group. This was in close accordance with the study conducted by Nayak M et al.¹⁵ who reported significantly higher number of pulp stones in the maxilla (12.36%) than in the mandible (5.95%) and with the studies conducted by Ranjitkar S et al.²³, Sisman Y et al.²⁵ and Turkal M et al.²⁶ who, also, confirmed similar findings with the results obtained from their studies.

The present study, also, evidenced more number of pulp stones in the posterior (molar) teeth than in anterior teeth in accordance with the results of the studies conducted by Gulsahi A et al.²⁷ with around 87.42% of posterior teeth afflicted with pulp stones in the study group as against 12.58% of the anterior teeth. Similarly, in the control group, the corresponding values were 85.92% in case of posterior while 14.08% in case of anterior teeth. Al-Hadi Hamasha A and Darwazeh A²² put forth a hypothesis based on the observations made from their study that since posterior (molar) teeth were the largest, the blood supply would be

increased in them, increasing the probability for more calcifications that are observed in the posterior teeth.

As concluded in the study conducted by Ozkalayci N et al.²⁸, a careful radiographic work-up and a multidisciplinary approach are, thus, of paramount importance not only for the successful treatment in cases of generalized pulp stones but, also, to predict the possibility of other associated systemic disorders that might have predisposed the subjects to have this kind of, till recognized, rare and less critically acclaimed clinical entity.

Limitations of the Present Study and Future Research Directions: The present study was planned to estimate the prevalence of pulp stones in patients diagnosed with or, undergoing treatment for CAD. The study consisted of 300 subjects within an age range of 20-55 years who were divided into 2 groups, the study group and the control group, with the study group consisting of 150 patients including 108 males and 42 females and the control group comprising of 150 age and sex-matched healthy controls.

Coronary artery disease (CAD) is caused by atherosclerosis of the coronary arteries leading to a reduction in blood flow to the heart. It is one of the leading causes of death worldwide. The paucity of data, along with a wide range in ethnicity, however, compounds the challenge of obtaining pure data regarding the prevalence of CAD. Furthermore, patients who have not developed a frank clinical disease are usually undiagnosed and not subjected for further investigations.

Studies indicate that patients with CAD show higher degree of pulp calcifications. Any study, therefore, on pulp stones, thus, has a possibility of excluding such patients who have not yet developed the clinical disease and might lead to a bias. Also, localized pulp calcifications are microscopically apparent in more than half of the teeth in young adolescents. However, pulp stones extending to the entire dentition are infrequent and need further evaluation to predict the risk of other probabilities of associated diseases which is rarely done on a war-footing basis and is rather underrated as of purely research interest leading to undiagnosed systemic diseases including undiagnosed or, frank, CAD.

Another important aspect is that pulp stones vary in size ranging from microscopic particles to larger masses that almost completely obliterate the pulp chamber. Amongst them, only the larger pulp stones are radiographically apparent while those which are either small in size or, relatively less calcified and in the initial stages of calcification are not detected by the conventional radiographs and underscore the total number of pulp stones considered in such kind of studies.

The lack of uniformity in the methodology in the studies conducted so far, also, lead to the introduction of biases as well as a lack of data which can be used for comparative analyses leaving an important lacuna to be filled-up in future studies. Multicentre information compilation from various studies based on similar methodology and with equal representation in relation to different types of population, region-as well as ethnicity-wise, thus, becomes a prerogative in dental and medical research fields to find the exact status and needful required in this arena.

This collation of data on the prevalence of pulp stones should include subjects in different age groups with consideration of the underlying systemic status, sex and using similar radiographic techniques to come to valid conclusions in this regard. A careful work-up for undiagnosed and not clinically manifesting CAD is the basis of such research.

CONCLUDING REMARKS

CAD patients have high chances of being affected with pulp stones. Higher prevalence of this entity in multiple teeth may warrant such an individual, in the presence of other compounding risk factors, as a candidate for CAD to be ruled-out based on a series of clinical and biochemical tests which have an obvious advantage of detecting changes before the clinical disease sets-in and manifests its signs and symptoms. General population statistics show that pulp stones have a higher predilection for maxilla as well as females. Much research with authentic region-wise documentation specifically carried-out within the ethnic populations must become a prerogative in dental and medical research fields to find the exact status and needful required in this arena of clinically-oriented research programs. Not only should the need for the studies in this relation be emphasized, but, also, there must be uniformity in the methodology, to rule-out the possibility of biases, so that an authentic data might be obtained which would facilitate multicentre information compilation for better outcomes that can be used for clinical interests.

REFERENCES

1. Kasper DL, Harrison TR. Harrison's Principles of Internal Medicine. 15th ed. NewYork: McGraw-Hill; 2005.
2. Zachariah G, Harikrishnan S, Krishnan MN, Mohanan PP, Sanjay G, Venugopal K, et al. Prevalence of coronary artery disease and coronary risk factors in Kerala, South India: A population survey, Design and methods. Indian Heart J 2013;65:243-9.
3. Sadr Bafqi SM, Salari M, Rafiee M, Nemayandeh SM, Abdoli AM, Karimi M, et al. Prevalence and Criteria of Metabolic Syndrome in an Urban Population: Yazd Healthy Heart Project. Tehran Univ Med J 2006;64:90-6.
4. Orban BJ, Sicher H, Bhaskar SN. Orban's Oral Histology and Embryology. 12th ed. Saint Louis: Mosby; 1972.
5. Ravanshad S, Khayat S, Freidonpour N. The Prevalence of Pulp stones in Adult Subjects of Shiraz Dental School: A Radiographic Assessment. J Dent (Shiraz) 2015;16:356-61.
6. Ezoddini-Ardakani F, Nemayandeh SM, Sadrbafighi SM, Hajihashemi S, Emami M, Kahtouei FG, et al. Diagnostic Value of Dental Pulp Stones in the Early Diagnosis of Ischemic Heart Diseases. Health 2015;7:336-45.
7. Ninomiya M, Ohishi M, Kido J, Ohsaki Y, Nagata T. Immunohistochemical Localization of Osteopontin in Human Pulp Stone. J Endod 2001;27:269-72.

8. White SC, Pharoah MJ. Oral Radiology Principles and Interpretation. 4th ed. St. Louis: Mosby; 2000.
9. Kajander EO, Ciftcioglu N. Nanobacteria: An alternative mechanism for pathogenic intra- and extracellular calcification and stone formation. Proc Natl Acad Sci USA 1998;95:8274-9.
10. Ciftcioglu N, Ciftcioglu V, Vali H, Turcott E, Olavi Kajander E. Sedimentary rocks in our mouth: Dental pulp stones made by Nanobacteria. Proc SPIE Int Soc Opt Eng 1998;3441:130-5.
11. Harrison TR. Harrison's Principles of Internal Medicine. Philadelphia: McGraw-Hill; 2002.
12. Maranhao de Moura AA, de Paiva JG. Pulpal calcifications in Patients with Coronary Atherosclerosis. Endod Dent Traumatol 1987;3:307-9.
13. Edds AC, Walden JE, Scheetz JP, Goldsmith LJ, Drisko CL, Eleazer PD. Pilot study of correlation of pulp stones with cardiovascular disease. J Endod 2005;31:504-6.
14. Khojastepour L, Bronoosh P, Khosropanah S, Rahimi E. Can Dental Pulp Calcification Predict the Risk of Ischemic Cardiovascular Disease? J Dent (Tehran) 2013;10:456-60.
15. Nayak M, Kumar J, Prasad LK. A radiographic correlation between systemic disorders and pulp stones. Indian J Dent Res 2010;21:369-73.
16. Aleksova P. Dental Pulp Calcification in Subjects with Cardiovascular Diseases: A Review. Int J Sci Res 2015;4:1335-8.
17. Kansu O, Ozbek M, Avcu N, Aslan U, Kansu H, Genctoy G. Can Dental Pulp Calcification Serve as a Diagnostic Marker for Carotic Artery Calcification in Patients with Renal Diseases? Dentomaxillofacial Radiology 2009;38:542-5.
18. Sener S, Cobankara FK, Akgunlu F. Calcifications of the Pulp Chamber: Prevalence and Implicated Factors. Clinical Oral Investigations 2009;13:209-15.
19. Yeluri G, Kumar CA, Raghav N. Correlation of dental pulp stones, carotid artery and renal calcifications using digital panoramic radiography and ultrasonography. Contemp Clin Dent 2015;6:S147-51.
20. Hill TJ. Pathology of the dental pulp. J Am Dent Assoc 1934;21:820-8.
21. Zeng J, Yang F, Zhang W, Gong Q, Du Y, Lin J. Association between dental pulp stones and calcifying nanoparticles. Int J Nanomedicine 2011;6:109-18.
22. Al-Hadi Hamasha A, Darwazah A. Prevalence of pulp stones in Jordanian adults. Oral Surg Oral Med Oral Pathol Oral Radiol Endod 1998;86:730-2.
23. Ranjitkar S, Taylor JA, Townsend GC. A radiographic assessment of the prevalence of pulp stones in Australians. Aust Dent J 2002;47:36-40.
24. Tamse A, Kaffe I, Littner MM, Shani R. Statistical evaluation of radiologic survey of pulp stones. J Endod 1982;8:455-8.
25. Sisman Y, Aktan AM, Tarim-Ertas E, Ciftci ME, Sekerci AE. The prevalence of pulp stones in a Turkish population: A radiographic survey. Med Oral Patol Oral Cir Bucal 2012;17:e212-7.
26. Turkal M, Tan E, Uzgur R, Hamidi M, Çolak H, Uzgur Z. Incidence and Distribution of Pulp Stones Found in Radiographic Dental Examination of Adult Turkish Dental Subjects. Ann Med Health Sci Res 2013;3:572-6.
27. Gulsahi A, Cebeci AI, Ozden S. A radiographic assessment of the prevalence of pulp stones in a group of Turkish dental subjects. Int Endod J 2009;42:735-9.
28. Ozkalayci N, Zengin AZ, Turk SE, Sumer AP, Bulucu B, Kirtiloglu T. Multiple Pulp Stones: A Case Report. Eur J Dent 2011;5:210-14.

TABLES

Table 1: Arch-wise prevalence of total number of pulp stones in the study and control groups

Group	Arch (%)		p-value
	Maxilla	Mandible	
Study Group	51.92%	48.08%	p<0.05
Control Group	58.37%	41.63%	

Table 2: Prevalence of pulp stones in posterior and anterior teeth in the study and control groups

Group	Region (%)		p-value
	Posterior	Anterior	
Study Group	87.42%	12.58%	p<0.05
Control Group	85.92%	14.08%	

Table 3: Side-wise prevalence of total number of pulp stones in the study and control groups

Group	Side (%)		p-value
	Right	Left	
Study Group	49.57%	50.43%	p>0.05
Control Group	50.70%	49.30%	

LEGEND FOR FIGURE

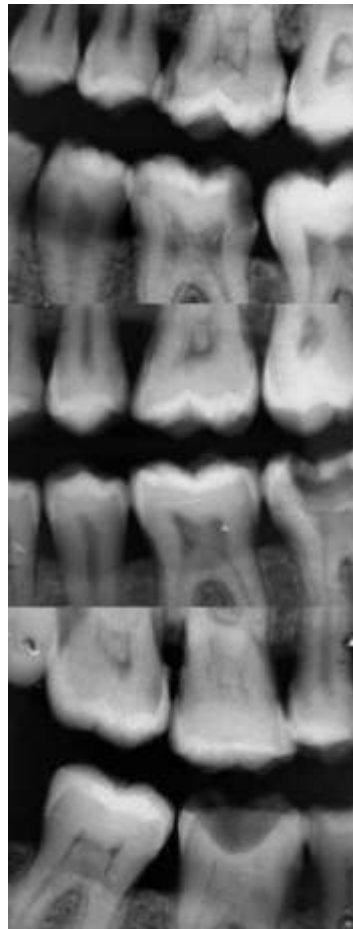


Figure 1: Posterior bitewing radiographs revealing pulp stones

Cite this article: Puttaraj T. Kattimani Pulp Stones, The Risk Predictors for Coronary Artery Disease (CAD): An Original Research Article. J. Cardiovascular Disease Res. 2020; 11 (2): 212 – 217