

Paradoxes of the Theory of Gravity

Ramulu, CH. Swpna

Assistant Professor, Assistant Professor,
Department of Humanities and Science,
Samskruti College of Engineering and Techology, Ghatkesar

ABSTRACT

Using the equations of the classical theory of gravity, I was able to demonstrate the inconsistencies in the physics computations. Alternatively, you might look into the physical features of space objects using theories like as vortex gravitation, cosmology, and cosmogony to find out more about them. The findings acquired enable us to assess and compare the various options.beyond and beyond objective, physical hypotheses.

INTRODUCTION

Since the time of Isaac Newton (1664), the attraction of bodies to celestial objects has been explained solely by the fact that the mass - or gravitational attraction - of the bodies is greater than the mass of the celestial objects.The quantity of matter - draws the attention of other matter. In the year 1915,The theory of relativity, developed by Albert Einstein, has refined the concept.Over the course of its 350-year life, this unsupported theory hasThe result of the interplay of gravity and mass of bodies wasA canonical theory is the most basic theory possible. Moreover, in addition toThis idea, according to academic standards, is supported by current science.not acknowledge any other scientific theories or ideasThe classical theory of relativity was in existence at its time.The concept of gravitation has sparked a great deal of debate.An explanation for these that is generally acceptedThere are no discrepancies at the present time.In this paper, we propose a theoretical explanation forcontradictions in the reciprocal attraction of bodies on the surface of the planetThe vortex theory of gravity is built on this foundation.The second part is a synopsis of the fundamental concepts.Vortex gravitation is a hypothesis of gravitational attraction.

THE VORTEX THEORY OF GRAVITY, SECOND PART

The vortex theory of gravity [1] is based on well-known physical principles.The fact that all of the celestial bodies spin is an astronomical reality.The most logical explanation for why this happened is as follows:There can only be one kind of movement - the rotation of heavenly bodies.Objects that caused the rotation of the vortex of cosmic matter -ether. Ether forming a global system of interconnectednessSpace vortices that are interconnected The speed at which an object orbits the earththe amount of ether contained inside each vortex (torsion), decreasing fromFrom the centre to the perimeter of the law of inverse proportionssquare of the removal's perimeter If the orbital velocity decreases, the orbital velocityAccording to the rules of aerodynamics, ether is a gas that may be compressed.higher stream pressure as a result of the increased flow There is a lot of pressure.The gradient provides a force that pushes the zone towards it.having the lowest pressure, i.e. closest to the core of the planetThe torsion bar is a bar that bends back and forth. As a result, the torsion is concentrated in the centre.collects cosmic matter and transforms it into a celestial bodybody. The movement of a body or substances in orbit around another.Torsion is the initial cosmic velocity, and both of these are constant.members of the space system's entourage (torsion).Take, for example, the equation of vortex gravitational theory.[1] demonstrates how to acquire

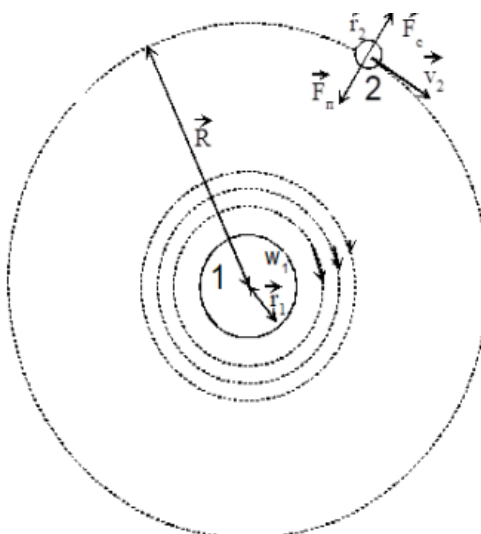


Fig.1. Two-dimensional model of gravitational interaction of two bodies.

The following forces are depicted as acting on body 2: F_c denotes the centrifugal force, F is the force of attraction between body 2 and body 1, and v_2 denotes the linear velocity of body 2 at the origin. r – the radius of the orbit, r_1 – the radius of the first orbital segment body 1, r_2 – the radius of body 2, w_1 – the angle between body 1 and body 2. The rotational velocity of ether at the surface of body 1 is measured. and m_2 represent the mass of the second body. As previously stated, this is related to the vortex pressure. A gradient is created. The pressure distribution along the radial axis and the velocity of light in the ether [1] as determined by the Navier-Stokes equations of motion for the motion of a rigid body fluid with high viscosity (gas).

$$\rho \left[\frac{\partial}{\partial t} + \vec{v} \cdot \text{grad} \right] \vec{v} = \vec{F} - \text{grad } P + \eta \Delta \vec{v} \quad (1)$$

In cylindrical coordinates with the radial symmetry $v_r = v_z = 0 = v(r)$, $P = P(r)$, v can be written as an equation system

$$\begin{cases} -\frac{v(r)^2}{r} = -\frac{1}{\rho} \frac{dP}{dr} \\ \eta \cdot \left(\frac{\partial^2 v(r)}{\partial r^2} + \frac{\partial v(r)}{r \partial r} - \frac{v(r)}{r^2} \right) = 0 \end{cases} \quad (2)$$

$$F_n = V \cdot \frac{\partial P}{\partial r} \quad (3)$$

After the necessary transformations (full account of the theory presented in [1]) is obtained: 1. equations for the force of gravity, depending on the rotational speed ether

$$F_n = \frac{4 \cdot \pi \cdot r_n^3 \cdot \rho \cdot w_1^2 \cdot r_1^3 \cdot m_2}{3 \cdot m_n \cdot r^2} \quad (5)$$

$$P_0 = P_b - \rho \cdot w_1^2 \cdot r_1^2 \quad (6)$$

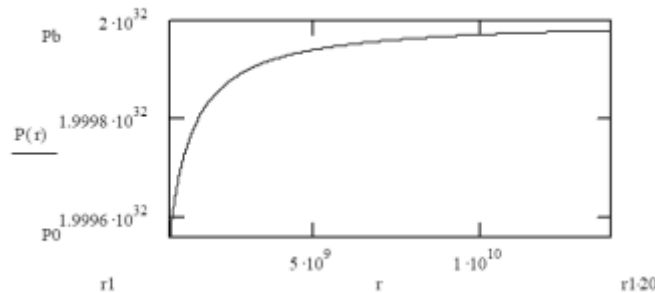


Figure 2. The radial distribution of the ether pressure for the Sun

Gravitational force exerted on any body (point) is shown to be dependent on the pressure gradient present at the place in the ether by equations vortex gravitation (3) and (4). The

The rate of ether production is inversely related to the pressure.

III. CONTROVERSY

3.1 Non-compliance of the gravitational interaction of three bodies.

$$F_n = G \cdot \frac{m_1 \cdot m_2}{r^2} \quad (7)$$

The gravitational constant $G = 6.672 \cdot 10^{-11} \text{ N m}^2 / \text{kg}^2$ is equal to the mass of bodies 1 and 2, and the mass of body 2 is equal to the mass of body 1. The distance between the bodies is represented by the constant r . Consider a couple of inconsistencies in the idea of and their interpretations in terms of the gravitational field. Gravity is explained by the vortex hypothesis. The units used in the International System of Units (SI) are approximate.

3.1.1 The gravitational interaction intensity between two bodies.

Three heavenly bodies were discovered on the basis of the theory of relativity. Gravity at all points in space and time (Equation 7) – Calculate the gravitational force influence on the moon by doing the following:

Gravity on Earth is equal to $F_{em} = 2,6 \times 10^{-3} \cdot \text{mm} \times \text{mm} \times \text{mm} \times \text{mm}$

In the case of solar gravity, the value of F_{sm} is $6 \cdot 10^{-3} \text{ mm}$. The gravitational pull of the sun is 2.3 times stronger than Earth's gravity, greater than that of the Earth. As a result, the moon cannot be a planet. a spacecraft orbiting the Earth. Calculate the influence of gravity on the activities of the objects. Oort cloud (also spelled Oort cloud): In the case of solar gravity, $F_{sg} = 5,6 \times 10^{-13} \cdot \text{x a month}$, $2,3 \times 10^{-10}$ in terms of galactic gravity (F_{go}). x a month

The gravitational pull of the galaxy is 410 times stronger than Earth's solar. As a result, the Oort cloud cannot be considered a satellite-based solar power system. A study of the gravitational interaction between three astronomical bodies. The vortex theory of gravity is used to explain the gravitational attraction of things. The strength of the relationship is determined by equation (3). The gravitational pressure differential created by the vortex in the etheric vortex (sometimes spelled etheric vortex) (torsion). The pressure gradient, as well as the absolute value of a torsion bar is always exactly proportional to its length. The orbital velocity of circulation of the planet is equivalent to according to the formulae 4 and 5. ether, according to the formulas 4 and 5. Ether - in a low-density gas atmosphere, ether is a good choice. It is made up of very small particles and is called it. As a result, he (ether) With the exception of nucleons, it may readily infiltrate any material.

As a result, the eddy currents that cross the torsion field are generated. bars - The Earth, the Sun, and the Galaxy are all free to move around. By the intermediary of one another. The pressure in the crossing is increasing. Areas are dependent on orbital streams with the lowest velocities. speed. The reason for this is that any counterclaim will be dismissed. therefore a quicker flow cannot modify (raise) the speed of the current flow. another torsion's slower flow, or vice versa. As a result, this is. The volume and frequency of use are determined by less high velocity. A pressure gradient is a difference in pressure. To put it another way, we have the addition of velocities. V_e plus V_s equals V_e . Where V_e denotes the orbital velocity. Earth torsion is caused by air flow, and orbital velocity is determined by V_s . Torsion of the air stream in the sun. We reduce the absolute value of the payment by a certain amount. as a result of the pressure at the confluence of torsion and compression. The equations of the theory of gravity vortex are built on this foundation.

The result is that the pressure in the Earth's torsion vortex exerts a force on the Moon's orbit that is three orders of magnitude greater than that of the pressure in the orbital plane. In the same spatial point, there is a stream solar torsion. As a result, the bodies circling the Earth, as well as the location. The pressure gradient is responsible for determining the shape of the orbits. Only in the torsion of the Earth. When it comes to determining the Earth's rotational dominance, The pressure is dependent on the orbit and torsion to which it is subjected. maintain the presence of air in the thread. Take, for example, the interplay between gravitational and pressure forces. The values obtained from the most distant satellite solar systems Oort cloud. According to the theory of gravity, the vortex velocity of a gravitational field is the torsion of the ether sun in the orbit of Oort

$$V_{\infty} = 1,4 \times 10^{16} \text{ m/c. Reducing the pressure on } - \rho \times$$

$$V^2 = - \rho \times 2,0 \times 10^{32}.$$

Ether velocity galactic torsion in orbit of the Sun
(the Oort cloud)

$$V_{\infty} = 1,2 \times 10^{20} \text{ m/c. Reducing the pressure on } - \rho \times$$

$$V^2 = - \rho \times 1,4 \times 10^{40}.$$

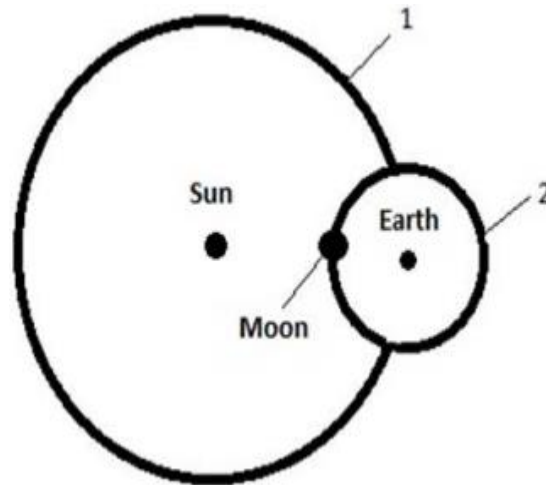


Fig. 3. Scheme ethereal, space and gravitational torsion bars. 1 - Earth's orbit of the sun torsion ether, 2 - lunar orbit in the earth's ether torsion.

3.2 Paradox Neumann – Seliger

Named after the German scientists K. Neumann and H. Seliger, who lived in the 19th century. Because of its less obvious nature and the fact that Newton's law of gravity does not provide a solution, answer that is appropriate in response to the query a gravitational field created by an infinite system of gravitational forces Celestial bodies are celestial bodies. As stated in Section 1.2 of this article, the paradox occurs when Because of the gravitational torsion, this phenomenon is explained. In addition, bars do not interact with one another. as a result, the gravitational force of the vortex increases in strength It is not possible to combine two or more items. As a result, the overall strength of The gravitational pull of a vortex cannot be infinitely large. That is to say, It is necessary for an infinite number of celestial bodies to create a a shared, unlimited gravitational force that would fill the whole universe the entirety of the universe In this instance, the presence of heavenly beings is established. It would be impossible to have bodies. Additionally, there are two more paradoxes that should be mentioned in The Newton equation (7) is as follows:

1. Whenever the distance between the two bodies reduces to a certain point, The gravitational force should tend toward its smallest possible value. up to and including infinite This is something that we do not notice, obviously. The force of attraction

2. This equation is unable to estimate the force of gravity. The gravitational pull of the heavenly body

Because every body has a three-dimensional measurement, and the radius is linear, the length of the body is precisely proportional to the cube of the radius of the body. As a result of this mismatch in the application of equations (8) and (9) came up with ludicrous outcomes: According to (9) a black hole containing tonnes of earth will form. have a radius of 9 millimetres This means that the density has increased. The size of the black hole will be measured in terms of astronomical units. 1030 kg/m^3 is the density of water. This density is much higher than the The mass of an atomic nucleus in grammes. However, if we do the math, The density of the Black Hole in our galaxy has a radius of one billion light years. It will be in the range of $R_s = 6,75 \times 10^{12} \text{ m}$, as specified in [7]. 5 kg/m^3 on the order of things? However, this density is equivalent to the volumetric density of the gas Assume that there is a black hole. There is an opening with a radius of $R_{bh} = 1020 \text{ m}$. It should include a The density of matter in the range of $10\text{-}14 \text{ kg/m}^3$ is reasonable. But this has a density that is lower than the density of ether

We may deduce the following from these calculations: The conventional Schwarzschild equation (8) as well as the equations of global gravity do not match up with each other, in accordance with physical laws

Body Part 3.4 "The Collapse of the Body Parts"

It was after the adoption of Newton's law of gravity that it became popularly discovered that some of the corpses were subjected to their own gravity, shrinking uncontrollably and "collapsing" - this is a virtual reality. They are no longer visible in their surroundings. The theory of vortices, gravitational pull based on the fact that ether cannot pass through the nucleons or a substance with a high concentration of nucleons. The result of this is that, under the effect of immense power, the gravitational pull of the vortex, at the core of the torsion. The same huge density that generates the core also forms the outer shell. For the inner boundary of this core is defined by the ether surface of the core, rotation in the appropriate direction. That is, the rate at which the object rotates, ether and the gravitational force on the surface of the planet. The vortex core is the highest level of achievement possible in this case, torsion. As a result, the problem of "collapse" of bodies in the body. There is no such thing as a vortex theory of gravity.

3.5 Dark Matter is a kind of matter that exists in the universe.

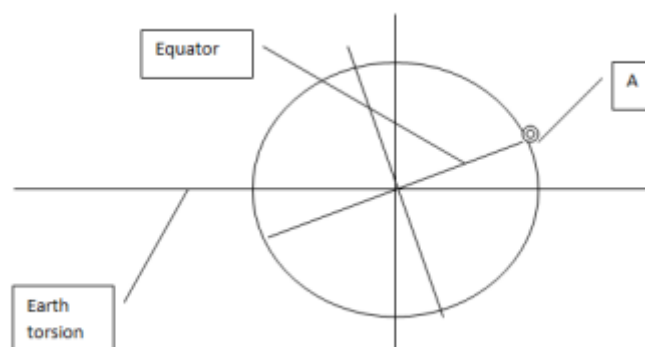
The earliest suggestion that there is a connection between them, there's something wrong with the estimated mass of the universe, there was a time in the mid-thirties of the twentieth century. Swiss. The speed was measured by astronomer Fritz Zwicky with which the Coma galaxy cluster (which is one of the most massive in the universe). It contains one of the largest known concentrations of us. Thousands of galaxies) are revolving around a shared centre of gravity, centre. The outcome was discouraging: the velocity of the bullet decreased. The galaxies were far bigger than what might be predicted, based on the overall mass of the cluster that was seen. This that the real mass of the Coma cluster is in the range of significantly more visible. However, the majority of the content. Some believe that being present in this sector of the cosmos is beneficial, a cause that is inaccessible to the general public. That observation, which manifests itself exclusively gravitationally, is one that is exactly as massive as before. Dark matter is the term used to describe this mass. The theory of vortex gravitation does not include the concept of attraction, in accordance with the weight and speed of ether. As a result of this, it is necessary to explain the existence of additional mass - dark matter. The gravitational force acting in any location of the universe is not necessary. This necessitates the creation of a related diagram. There is a lot of speed and ether tension in this location.

3.6 The ebb and flow of events.

As is well known, the appearance of the tides in the seas occurs every 24 hours, the time has been extended by 50 minutes owing to the impact of the gravitational field produced by the moon. However, the earth's surface is only drawn once in relation to the Moon. During that time period, the tides occur twice. It is necessary in order to remove this source of concern in the scientific community (Galileo, for example). Descartes, Newton, and others) were the ones who came up with the idea, theory stating that the second time the tides are brought about because of the centrifugal force. So far, the science-based approach has been successful, estimate of the likelihood of occurrence and the consequences of. There is no such thing as centrifugal force. The second issue is that the gravitational pull of the moon is operating on the Earth. The earth's surface is 200 times fainter than the sun in terms of light intensity. Therefore, it is necessary to declare that the sun - the source of all life.

The tides are mostly responsible for this. However, the earth's surface faces the sun for 24 hours and 50 minutes each day, and the tides occur twice every 24 hours and 50 minutes. It is certain that the traditional. Although the explanation of the tides is very contentious, it is still valid. It is - and it is the only one that is universally recognised. The model of vortex gravitation enables you to combine a number of things together, fresh explanation for this occurrence is being offered, and it goes like this:

The shape of the vortex is determined by the gravitational pull of the vortex. The earth, the air, and gravitational torsion - a disc-shaped, elliptical form [1]. The flat-symmetrical [2]. The axis of the Earth's rotation. The plane of the lunar orbit is largely coincident with the plane of torsion. The equatorial plane of the Earth has an inclination of 45 degrees. The torsion about 24 degrees with respect to the plane of the Earth. The geometrical relationship between these emotions is as follows: It is obvious that each point on the Earth's surface is connected to the other. drawn in a plane with a considerable amount of detail. The inclination of the Earth's surface with respect to the plane of the planet Torsion due to gravitational pull. As a result, there is just one point. the gravitational pull of the earth's equatorial surface. The direction of constant torsion is intersected transversely by its direction. As a result, the vortex's intensity is increased in this instance. The gravitational pull of the Earth on that spot (see Fig. 3)



CONCLUSION

The above-mentioned inconsistencies in the classical theories of gravity are simply a few of the many physical obstacles that these theories must contend with. because of the existence of and the gravitational characteristics of things or substances. No one has ever been shown to be right. On the basis of this, we can conclude that Newton's and Einstein's theories are correct. Gravity models that are mathematical or empirical in nature deflecting the advancement of science in the wrong direction.

There are no vortices in the vortex theory of gravity. inconsistencies in the physical establishment of any. Properties of a cosmological material. This demonstrates the objectivity of its principles in order to advance scientific research.

REFERENCES

- [1]. S. Orlov. Foundation of vortex gravitation, cosmology and cosmogony. Global journal of science Frontier research. Physic and Space Science Volume 12 issue 1 Version 1.0 January 2012
- [2]. V A Atsurovskiy. General ether-dynamics. Energoatomizdat. Moscow, Russia. 1990. Page 278.
- [3]. US Space Command Reentry Assessment - US Space Command Fact Sheet. SpaceRef Interactive (March 1, 2001)
- [4]. Yeomans, Donald K. HORIZONS System. NASA JPL (13 июля 2006).
- [5]. K. Schwarzschild Über das Gravitationsfeld eines Massenpunktes nach der Einsteinschen Theorie Sitzungsberichte der Königlich-Preussischen Akademie der Wissenschaften 1. - 1916. - 189-196.
- [6]. Downes, D.; Martin, A. H. M. Compact Radio Sources in the Galactic Nucleus // Nature. - 1971. - Vol. 233. - C. 112-114.
- [7]. A P Gulyaev. Astronomy calendar. Cosmosinform. Moscow, Russia. 1993. Page 285.
- [8]. S.V. Ordin, [B.N. Sharupin and M. I. Fedorov], J. Semiconductors (FTP), 32(9), 924-932, 1998, Normal lattice vibrations and the crystal structure of anisotropic modifications of boron nitride