

EXPERIMENTAL INVESTIGATION INTO THE USE OF LIGHTWEIGHT CONCRETE CONTAINING OIL PALM KERNEL SHELL AS A REPLACEMENT FOR COARSE AGGREGATE AND BINDING MATERIAL WITH FLYASH

¹Pathkala Rajkumar,²Vinayadeep G M,³Deepika Nemali
^{1,2,3}Assistant Professor

Department of Civil Engineering

Kshatriya College of Engineering

ABSTRACT

A safe haven is one of the most fundamental requirements of human existence. Unfortunately, suitable housing for the vast majority of the homeless has not materialised during the course of this century. The public has expressed concern over the high cost of concrete materials, which has been a factor in both building and civil engineering projects. As a consequence of these and other causes, research on genetic local resources that are dumped as garbage into our environment, causing pollution and traffic congestion, has been carried out as an alternative material. As a direct consequence of this, a research was carried out with the purpose of determining the viability of using palm kernel shell as a partial replacement for coarse aggregate in concrete. The oil palm kernel shell, also known as OPKS, is a kind of biosolid waste that is produced as a byproduct of the palm oil industry in tropical countries. This waste may be used as an aggregate in concrete. Since 1984, OPKS has been used as a natural lightweight aggregate (LWC) in the production of lightweight concrete for the purpose of research studies. In this study, the fresh, mechanical, and bond properties of grade M30 lightweight concrete, more especially oil palm kernel shell concrete (OPKSC), are compared with those of normal weight concrete (NWC) of comparable strength. The Oil Palm Kernel Shell Committee (OPKSC) has converted an industrial byproduct known as oil palm kernel shell (OPKS) into lightweight aggregates (LWA). For each and every combination of mix proportions of ten percent, twenty percent, thirty percent, and fortieth percent oil palm kernel shell partial substitution of coarse aggregate, a preferable replacement of binding material comprised of flyash at a constant

percentage of five percent was used. In contrast to the NWC, the OPKSC resulted in a density reduction of around 20%.

INTRODUCTION

Albeit concrete is the most generally utilized structure material on the planet today, the significant expense of substantial components like concrete, fine and coarse total has provoked the mission for elective structure materials. It is difficult to exaggerate the significance of cement in development projects and common works. The enormous interest for concrete in development, which utilizes typical weight totals (NWA) like rock and sand, has brought about a huge exhaustion of normally happening totals, making irreversible ecological damage. A large number of them can be utilized as lightweight total (LWA) to make light weight concrete, which enjoys the benefit of bringing down oneself load of substantial designs when contrasted with regular cement, which has a high dead burden. They can likewise be utilized for underlying strength, flexibility, and financial feasibility. As a result, integrating these waste elements will assist to minimise the pace of non-renewable natural resource exploitation and create more durable concrete. Lightweight aggregates made from wastes such as expanded pelletized fly ash aggregates, sintered fly ash aggregates, expanded slag gravel, and blast furnace slag are manufactured and used. In reality, waste utilisation has been shown to be successful in industrialised countries. Modern design methods in industrialised nations tell volumes about the level of competence in terms of knowledge, research, and experience available. As a result, the creation of new types of lightweight aggregates on a wide scale is quicker. There has been increased awareness of the use of agricultural and

industrial wastes as possible construction materials, particularly in agro-based developing nations like India. As a sustainable alternative, industrial wastes may be used to make environmentally friendly concrete.

LITERATURE REVIEW:

1. U. Johnson Alengaram in his study Impact of cementitious materials and total substance on Palm shell concrete expressed that The impact of cementitious materials, fine and coarse total substance on functionality and compressive strength of palm portion shell concrete. cementitious material was added 10% silica fume as extra cementitious material.
2. Payam Shafiq stated that Oil palm shell (OPS) is a type of horticultural strong waste in the tropical systems. Examination throughout the most recent twenty years shows that OPS can be utilized as a lightweight total for creating underlying lightweight total cement. The thickness of OPS concrete is around 20 - 25% lower than ordinary weight concrete.
3. Johnson Alengaram mentioned that the physical and mechanical properties of OPKS are summed up alongside mechanical, strength and utilitarian properties and underlying conduct of OPKS concrete (OPKSC) in his work Utilization of oil palm part shell as lightweight total in concrete – A survey.
4. Muhammad Aslam discussed that OPBC lightweight total produces underlying lightweight cement. OPBC total has great holding strength with mortar because of its surface. OPBC RC radiates have comparable shear and displacement conduct to the traditional RC radiates in his work Oil-palm side-effects as lightweight total in substantial combination.

Methodology

The project is accomplished by undertaking the methodology as shown below and the various material process are detailed in this chapter.

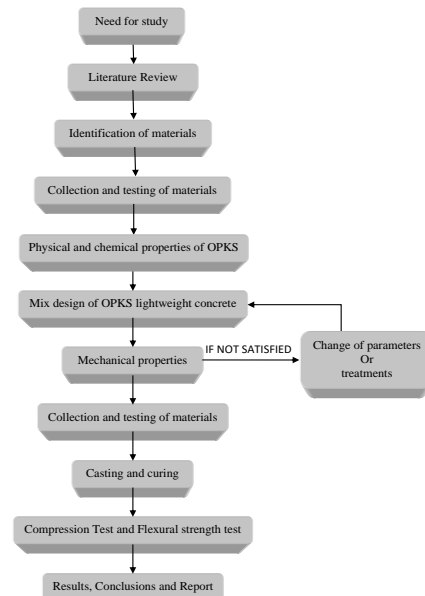


Fig 1 Methodology Flow Chart

OBJECTIVES

- To determine the characteristics of Oil Palm Kernel Shells as fractional replacement of coarse aggregate with and alternative replacement of binding material with Fly Ash to produce low density concrete.
- To study the feasibility of using OPKS as coarse aggregate in concrete to make lightweight concrete.
- To reduce the water absorption rate of OPKS aggregate and thereby analyse the alkali-silicate reaction in OPKS concrete.
- To study the mechanical properties of OPKS concrete.

MATERIALS USED:

The materials used usually need to be placed in dry environment and air dry naturally. The detailed description of each material that were required for this study is discussed below:

Cement

The cement utilized in the examination is ordinary Portland cement of 53 grades provided from Ultra Tech concrete industrial facility.

Table 1 Properties of cement

PROPERTIES OF CEMENT	
Properties	Values
Specific gravity	3.17
Fineness	95%
Normal consistency	35%
Initial setting time	30mins
Final setting time	more than 30 mins



Fig 2 Cement Fine Aggregate

It represents 60-80 percentage of capacity and 70-80 percentage of the heaviness of cement and characterizes concrete dimensional security. The actual properties of soil are arranged in table 2.

Table 2 Properties of Sand

PROPERTIES OF FINE AGGREGATE	
Properties	Values
Specific gravity of FA	2.55
Fineness modulus	2.58
Zone	III

The sieve analysis table & graph of fine aggregate is given in Table 3 & Fig. 7

$$\text{Fineness Modulus FM} = \frac{\sum F}{100} = \frac{258}{100} = 2.58$$

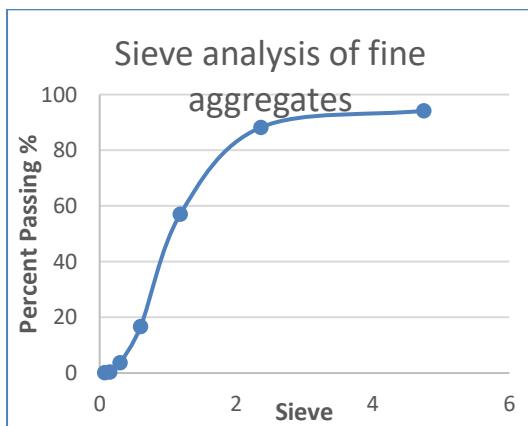


Fig 3 Sieve analysis of fine aggregates Coarse Aggregate

Properties of totals to a great extent affect the strength, toughness, usefulness and economy

of cement. The actual properties of soil are classified in table 3 Table Properties of coarse aggregate

Table 3 Table Properties of Coarse Aggregate

PROPERTIES OF COARSE AGGREGATE	
Properties	Values
Explicit gravity	2.40

Oil Palm Kernel Shell

Oil Palm portion shells (OPKS) otherwise called Oil Palm Shells (OPKS), are the side-effect of palm oil and palm bit oil creation and are parts of shells that outcome from the separating of the nuts. OPKS is obtained as crushed pieces, the sizes of which vary from fine aggregates to coarse aggregates, after the crushing of palm kernel to remove the seed, which is utilized in the creation of palm kernel oil (Olutoge, 2010). Oil Palm kernel shells are tough, flaky and of irregular shape (Oti and Kinuthia, 2015). There is no specific type of structure that can be used to refer to the palm kernel shell. The structure depends on the precedent of breaking during the nut cracking. It is usually composed of many shapes among which are roughly parabolical or quasi-circular shapes, flaky shapes and other irregular shapes (Okafor, 1988). OPKS are solid in nature and do not deteriorate easily when used for concrete and therefore, do not dirty or leach to produce poisonous substances (Basri et al., 1999). OPKS may consists of about 65 to 70 percentage of medium size particles in the range of 5 to 10 mm based on the method of cracking the nut (Alengaram et al., 2010).



Fig 4 : Crushed oil palm kernel shells of different sizes

OPKS physical and mechanical properties make it suitable for so many applications. It can be utilized as an aggregate for concrete creation (Okafor, 1988; Okpala, 1990; Osei and Jackson, 2012). Okoroigwe et al. (2014) used OPKS as a sorbent material for industrial water treatment and stated that the physical and chemical properties of the material make it suitable for the purpose.

OPKS can also be used in road construction. However, for heavily trafficked roads, OPKS replacement for aggregate of stone dust and bitumen in 10% blend with asphalt is recommended (Ndoke, 2006). OPKS is also used in the preparation of pozzolana, a cement substitute material that has been developed by the Kwame Nkrumah University of Science and Technology, Kumasi, Ghana (FAO Rome, 2002). Also, Oti and Kinuthia (2015) used OPKS ash to produce concrete and stated that the potential to replace up to 50% Portland cement with OPKS ash burnt at oven temperature of 750°C is more feasible. Also, a recent study has shown that OPKS can be used as a partial replacement for sand in sandcrete block production. Blocks produced from OPKS aggregates are heavier, denser and stronger than the traditional sandcrete blocks when the OPKS aggregate content do not exceed 10% (Dadzie and Yankah, 2015).

Physical properties for treated OPKS.

Greatest grain size of OPKS total utilized in present examination is 12 mm though Malaysian OPKS has 13 mm. Mass thickness of OPKS total is 350–480 kg/m³ and this is the justification lower thickness of cement. Water ingestion of OPKS utilized in this examination and Malaysian OPKS are comparable. Thickness of OPKS utilized in this exploration is 3 mm while Malaysian OPKS goes from 0.3 to 8 mm. Flakiness record and prolongation list are comparable for OPKS totals utilized in this examination and Malaysian OPKS however higher than regular totals.

Oil Palm Kernel Shell Concrete

Oil Palm Kernel Shell concrete (OPKSC) is a concrete produce by substituting coarse aggregate partially with OPKS. Depending on the mix design, it can be classified as either Structural Light-Weight Concrete (SLWC) or an Insulating Lightweight Concrete when the 28-day compressive strength is below 17 MPa. According to the American Concrete Institute (ACI), Structural Light Weight Concrete is pigeon-holed as a substantial thru with low thickness total that has an air-parched thickness of not in excess of 115 lb/ft³ (1840 kg/m³) and a 28-day compressive strength of in excess of 2,500 psi/17 MPa (ACI 116R, 2000). BS 5328 (1997) defined SLWC as

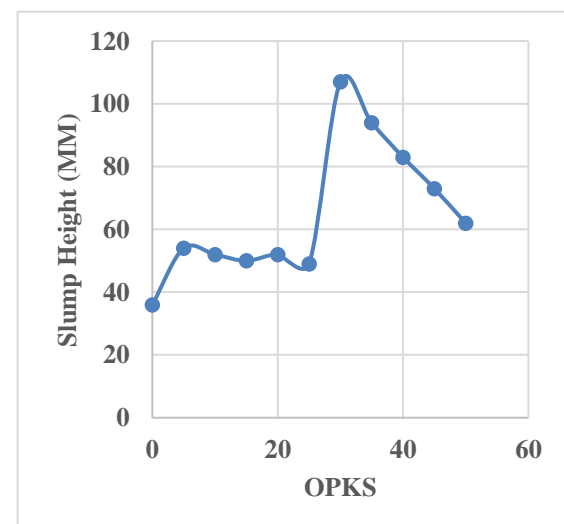
hardened concrete having an oven dried density not greater than 2000 kg/m³. Okafor (1988) suggested that the use OPKS as a full replacement of coarse aggregate can't make concrete with compressive strength above 30 MPa and that OPKS is suitable for concrete grade 25 and below compared to conventional coarse aggregates. Be that as it may, in last exploration, Alengaram et al. (2010) expanded the 28-days compressive solidarity to 36-38 MPa by fusing silica smolder while Shafigh et al. (2011) fostered another strategy to deliver high strength OPKS cement of 28-days compressive strength of 53MPa by utilizing squashed OPKS. Osei and Jackson (2012), examined OPKS as Coarse Aggregates in Concrete and discovered the likelihood to supplant coarse total up to 100% however suggested that clustering by volume ought to be utilized for better outcomes. The mechanical and underlying properties of OPKSC have been contrasted and ordinary weight concrete (NWC) by numerous scientists to show the viability of OPKSC (Alengaram et al., 2013).

Physical properties of oil palm kernel shell concrete

Physical properties of NWC are the same for OPKSC. Main physical properties of concern for OPKSC include those of workability, density, and water absorption of the concrete.

Workability of Palm Kernel Shell Concrete

The most important property of fresh concrete is its workability defined as the ease with which concrete is mixed, transported, placed, compacted, and finished without segregation. Slump test is a standard test for determining the workability of concrete. It is used to calculate the variation in the uniformity of mix of a given proportion and to measure the consistency of the concrete. Workability of OPKSC is dependent on the water to cement ratio and the content of OPKS. As can be seen in Graph 3-2, Danashmand and Saadatian



(2011) performed a slump test on OPKSC for different percentages of OPKS (Oil Palm Shell-OPKS) content as a partial replacement for coarse aggregate with a constant water cement ratio of 0.40 and showed that with increase in OPKS content, the workability of the concrete reduces.

Figure 5 : Slump Test for different percentage of OPKS content (Danashmand and Saadatian, 2011).

A drop in OPKS content and a subsequent increase in fine aggregate content rises workability as can be seen from reports by different researchers summarized in Table 5.

Table 5: Slump of OPKSC by researchers for different mixes

Author	w/c	Mix Proportion	Slump (mm)
Abdullah 1984	0.6	1:1.5:0.5	200
	0.4	1:2:0.6	260
Okafor 1988	0.48	1:1.7:2.08	8
	0.65	1:2.1:1.12	50
Okpala 1990	0.5	1:1:2	30
	0.6	1:1:2	63
	0.7	1:1:2	Collapse
	0.5	1:2:4	3
	0.6	1:2:4	28
Mahmud et al. 2009	0.35	1:1:0.8	55
		1:2:4	160

Density of Palm Kernel Shell Concrete

Structural uses of Light Weight Concrete (LWC), the mass is often additional important than the strength (Rossignolo et al., 2003). The density of concrete is study in terms of bulk density, fresh density, and dry density. According to Okafor (1988), the fresh density of OPKSC is in the range of 1753 — 1763 kg/m’ dependent on the mix proportion, water to cement ratio, and also the use of sand. Mannan and Ganapathy (2001), founded on the mix proportion also reported the fresh density of OPKSC in the range of 1910 1958 kg/m’. Alengaram et al., 2008, reported the fresh density of OPKSC to be approximately 1880 kg/m’ by incorporating 10’7o silica fume and 5to fly ash by weight with a cement: sand: aggregate: water ratio of 1: 1.2:0.8:0.35. Usually, the freshing density of OPKSC is about one hundredto hundred and twenty kg/m3 lower than the saturated density of LWC (Alengaram et al., 2013). As shown on Graph 3-3, Osei and Jackson (2015) showed that the dried density of OPKSC reduces with an upturn in OPKS content but increases with curing time.

Water Absorption of Palm Kernel Shell Concrete

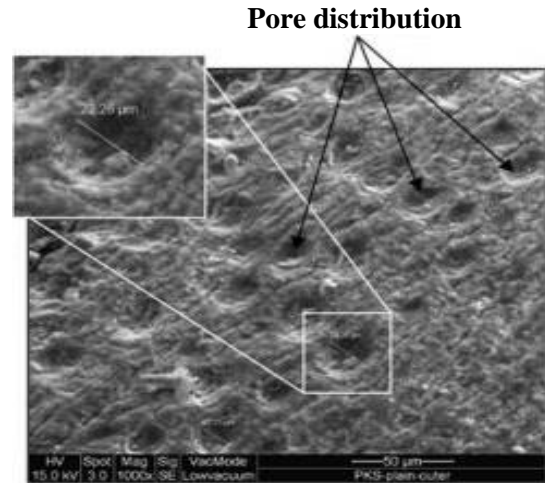


Figure 6 :Pores of the outer surface of OPKS (Alengaram et al., 2011).

According to Basheer et al. (2001), water assimilation is the means of means of transport of liquids in permeable solids affected by surface tension acting in the ducts. Water absorption for LWC such as enlarged polystyrene concrete and pumice stone aggregate concrete is in the range of 369 corresponding to Babu and Babu (2003), and 14 22% according to Guduz and Ugur (2005) respectively. For OPKSC, Teo et al. (2007) showed that the water absorption is 11.23’ o and 10.64’ o for air dry curing and full water curing respectively.

Mechanical properties of oil palm kernel shell concrete

The mechanical properties of OPKSC are dependent on the mixed design chosen. As indicated by Shetty (2005), blend plan techniques that apply to ordinary weight concrete are for the most part hard to use with lightweight total cement. Abdullah (1996) recommended that preliminary blends are important to accomplish a decent blend plan for OPKSC. Likewise, Osei and Jackson (2012), subsequent to clustering by weight and by volume for OPKSC, inferred that grouping by volume gives great quality mechanical properties than bunching by weight.

Compressive Strength of Oil Palm Kernel Shell Concrete

The compressive strength is the most utilized constraint to illustrate the quality of concrete in preparation (Weigrink et al., 1996). Any remaining mechanical boundaries, for example, flexural strength, parting rigidity and

modulus of versatility straightforwardly rely upon the compressive strength of the substantial (Alengaram et al., 2013).As shown in Graph 3-5, Ikponmwosa et al., (2014), Daneshmand and Saadatian (201 I), and Olutoge et al. (2012), all reported that the compressive strength of OPKSC is dependent on the amount of OPKS as aggregate in the concrete and that the strength increases with curing age.

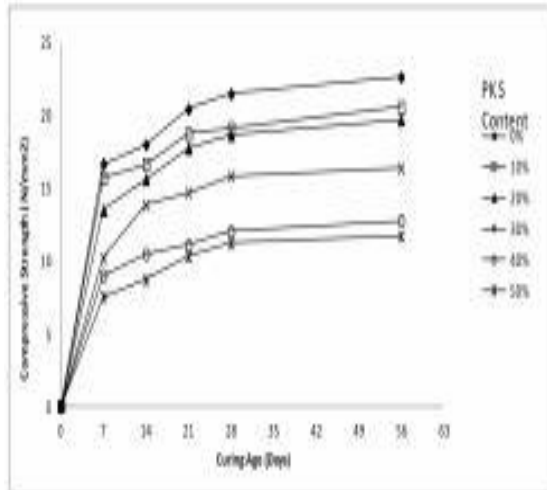


Figure 7: Compressive strength of OPKSC with curing age (Ikponmwosa et al., 2014). Depending on the mix design, percentage of OPKS aggregate, and method of curing, different grades of OPKSC have been reported by researchers. Table 6 shows the compression strength of OPKSC by various researchers. Okpala (1990) reported a 28-day compressive strength of 22.2 MegaPa using a water to cement ratio of 0.5 and a mix design of 1: 1: 2 (cement: sand: aggregate). Shafigh et al. (2011), incorporated steel fibers using a water to cement ratio of 0.38 and a design mix of 1: 1.736: 0.72 (cement: sand: aggregate) and reported a 28th-day compressive strength in a range of 39.34 — 44.95 MegaPa.

Table 6: The compressive strength of OPKSC at 28 — day

Author	Water/Cement Ratio	Mix Proportion	Compressive Strength at 28 days (MPa)
Okafor, 1988	0.48	1: 1.7: 2.08	23
Okpala, 1990	0.5	1: 1: 2	22.2
Alengaram et al., 2010	0.35	1: 1.2: 0.8	37.41
Shafigh et al., 2011	0.38	1: 1.736: 0.72 (+steel fibers)	39.34-44.95

Suitability of oil palm kernel shells in concrete

OPKS has been experimented in research as light weight aggregate (LWA) to produce light weight and low-cost concrete since 1984 (Alengaram et al., 2013). According to Shafigh et al. (2010), research throughout the most recent twenty years has shown that OPKS can be utilized as a lightweight total for creating minimal expense and underlying lightweight cement. Also, it has been reported by Yap et al. (2013), that OPKS is a suitable replacement for coarse aggregate to emithigh-level strength LWC with 28 days compressive strength up to 53 Mega Pa.

Okafor (1988) tested the actual properties of the shell, the compressive, flexural, and malleable parting strength of the OPKS concrete. Three blends of generally unique water to solidify proportion were utilized with 1009c coarse total supplanting with OPKS. The properties tried were contrasted and those of comparable substantial examples made with squashed rock as coarse total. The results showed that the material is suitable to produce concrete grade 25 and below. Also, Williams et al. (2014), created some substantial with 1009c substitution of coarse total utilizing OPKS at a blend plan of I:2:4 (concrete: sand: coarse total) and a water to solidify proportion of 0.65. The outcomes showed that the compressive and flexural strength improved

with period of relieving, however the compressive and flexural strength of OPKSC were low when contrasted with that of the NWC. They reasoned that OPKS can be utilized for substantial creation as lightweight total and along these lines can be utilized to deliver LWC. The properties of OPKS new cement are anyway fantastic, entirely serviceable, reliable, and effortlessly positioned.

Therefore, with the above information, the OPKS is suitable to produce low structural concrete by replacing coarse aggregate.

Fly Ash

The ignition of coal at high temperatures and pressing factors in power stations produces various sorts of debris. The 'fine' debris portion is conveyed upwards with the vent gases and caught prior to arriving at the climate by profoundly proficient electrostatic precipitators. This material is known as fly debris. It is made for the most part out of incredibly fine, smooth circles and looks like concrete. The coarse debris part falls into the meshes beneath the boilers, where it is blended in with water and siphoned to tidal ponds. This material, known as base debris, has a dirty, sand-like surface. The utilization of fly debris and base debris in development has been set up for quite a long time. Applications range from giving the cementations material in concrete, to use as a basic fill material or a lightweight total in the production of squares. Utilizing fly debris makes a positive commitment to the climate. Fly debris is utilized in numerous applications to supplant normally happening totals and minerals, which can diminish fundamentally the interest for ordinary totals (stone). Fly debris is additionally utilized as a segment in the creation of flowable fill, which is utilized as self-evening out, self-compacting inlays material in lieu of compacted earth or granular fill. Flowable fill incorporates combinations of Portland concrete and filler material and can contain mineral admixtures, like fly debris. Filler material normally comprises of fine total (much of the time, sand), however some flowable fill blends may contain around equivalent segments of coarse total and fine totals.

Properties of fly ash

Studies by Khairul Nizar. (2007) have shown that the physical and substance properties of FLA are reliant upon the dirt science and climatic conditions. Similarly, studies made by Mohd Mustafa Al Bakri Abdullah. (2014) also showed that the distinctions in the physical and compound properties of FLA might be because of waste produce during quarrying. Therefore, properties of FLA largely depend on chemistry, climatic conditions, and internal grain structure applied during the cooling of molten.

Chemical Properties of Fly Ash

The compound syntheses of FLA from different areas are introduced in Table 7. Fly debris comprises basically of oxides of silicon, aluminum iron and calcium. Magnesium, potassium, sodium, titanium, and sulfur are likewise present less significantly. At the point when utilized as a mineral admixture in concrete, fly debris is named either Class C or Class F debris dependent on its substance organization. American Association of State Highway Transportation Officials (AASHTO) M 295 [American Society for Testing and Materials (ASTM) Specification C 618] characterizes the substance piece of Class C and Class F fly debris.

- Class C remains are for the most part gotten from sub-bituminous coals and comprise essentially of calcium alumino-sulfate glass, just as quartz, tricalcium aluminate, and free lime (CaO). Class C debris is likewise alluded to as high calcium fly debris since it normally contains in excess of 20% CaO.
- Class F cinders are commonly gotten from bituminous and anthracite coals and comprise fundamentally of an alumino-silicate glass, with quartz, mullite, and magnetite likewise present. Class F, or low calcium fly debris has under 10% CaO.

Table 7: The Chemical composition of fly ash

Compounds	Fly Ash Class F	Fly Ash Class C	Portland Cement
SiO ₂	55	40	23
Al ₂ O ₃	26	17	4
Fe ₂ O ₃	7	6	2
CaO (Lime)	9	24	64
MgO	2	5	2
SO ₃	1	3	2

Physical Properties of Fly Ash

Colour

Fly debris can be tan to dim dark, contingent upon its compound and mineral constituents. Tan and light tones are commonly connected with high lime content. A caramel tone is ordinarily connected with the iron substance. A dull dim to dark tone is regularly credited to a raised unburned carbon content. Fly powdery grey is normally extremely steady for each force plant and coal source

SuperPlasticizer

- An industrially accessible sulfonated naphthalene formaldehyde-based superplasticizer (CONPLAST SP 430) was utilized as a synthetic admixture to upgrade the usefulness of the solid.
- To give astounding quickening of solidarity acquire at early ages and significant expansion in strength at all ages by altogether diminishing water interest in the solid blend.
- Particularly appropriate for high early strength necessities.
- To essentially improve the functionality of blended and expanding water.
- To give improved toughness by expanding by-expanding extreme strength and lessening solid penetrability.

Dosage

7ml of conplast for 1kg of cement



Fig 8 : Conplast

Water

Consumable water utilized for projecting and relieving.

CONCRETE MIX PROPORTION

Stipulations for Proportioning

- Gradedesignation:M30
- Typeofcement:OPC 53grade
- Max nominal sizeofaggregate:20mm
- Mincementcontent :320kg/m³
- Maxw/cratio:0.40
- Workability:25-50 mm (slump)
- Exposurecondition :Mild
- Degreeof supervision:Good
- Typeofaggregate:Crushedangular
- Maxcementcontent:450kg/m³
- Chemicaladmixture:Super-plasticizer

Test Data of Materials

Compressive strength	= 30 N/mm ²
Aggregate Type	= Crushed
Degree of workability	= 0.90
Degree of quality control	= Good
Type of exposure	= Mild
Specific Gravity, Cement	= 3.15
Coarse aggregate	= 2.6
Fine aggregate	= 2.6
Water Absorption, Coarse aggregate	= 0.5%
Fine aggregate	= 1.0 %

Results

Compressive Strength after 7Day

The deliberate compressive strength esteems are introduced in the accompanying Tables. The outcomes got for different rates of Fly ash and Oil palm kernel shell i.e., 0%, 10%, 20%, 30%, and 40% of Oil palm kernel shell and 5 % of fly ash is arranged. In view of the test outcomes, diagrams are plotted.

Table 8: Compressive Strengthafter 7 days

S. No.	Percentage of Replacement	Compressive strength (N/mm ²)	Average compressive strength (N/mm ²)
1	LWC-OP0	20.74	20.091
		21.09	
		20.89	
2	LWC-OP10	21.67	21.85
		21.92	
		21.96	
3	LWC-OP20	23.21	23.29
		23.26	
		23.30	
4	LWC-OP30	24.52	24.75
		24.54	
		25.18	
5	LWC-OP40	24.37	23.48
		23.07	
		23.01	

S. No.	Percentage of Replacement	Compressive strength (N/mm ²)	Average compressive strength (N/mm ²)
1	LWC-OP0	30.11	29.95
		30.37	
		29.37	
2	LWC-OP10	28.01	30.26
		31.24	
		31.52	
3	LWC-OP20	32.15	32.25
		32.45	
		32.16	
4	LWC-OP30	34.02	34.26
		34.26	
		34.49	
5	LWC-OP40	32.10	32.52
		32.90	
		32.56	

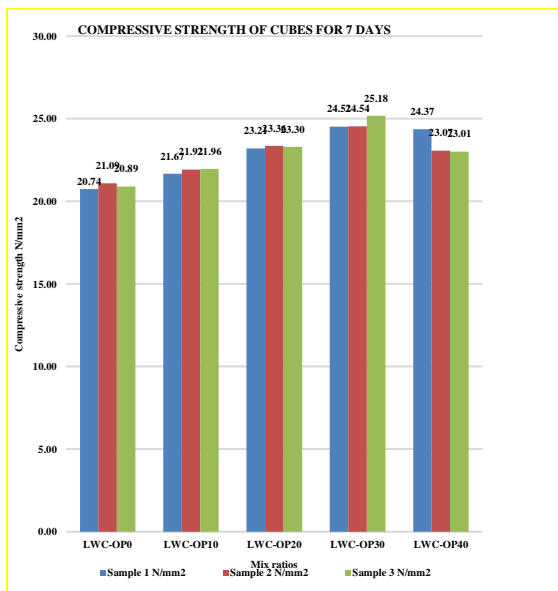


Figure 9 : Compressive strength after 7 days

Table 9: Compressive Strength after 14 days

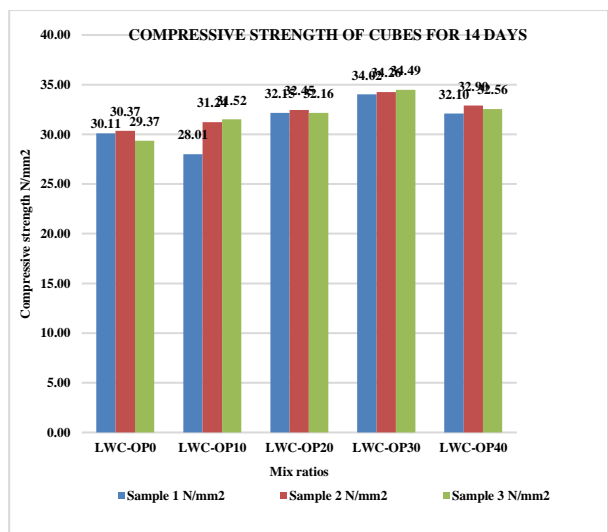


Figure 10 : Compressive strength after 14 days

CONCLUSION

The concluding remarks are obtained from the comparative study of strength using different percentage of replacements with OPKS. Based on the above results the ensuingsuppositions may be drawn.

- ✓ By and large, OPKS total was formed to be a decent replacer of coarse total in the creation of frivolous cement are inclined to high water ingestion pace of 24–25%. Thus, Operations are coated with water repulsive covering. This aides in keeping up the water assimilation rate to 6%.
- ✓ Additional utilization of mineral water by NTOPKS total prompts higher water concrete proportion just about 20% high, which influences the usefulness and toughness of the NTOPKS concrete. The

effect of functionality is unmistakably noticed, as the compressive strength is 40–half lower in NTOPKS concrete than the TOPKS concrete.

- ✓ The strength of 10%,20%,30% and 40% OPKS concrete with an expansion of 5% fly debris to all blend proportions, tests delivered lightweight cement with compressive strength coming to up to limit of 38.07 N/mm² and least of 33.62 N/mm² for 28 days which fulfils the prerequisite for underlying light weight concrete.
- ✓ Concrete with the 30% substitution gives most elevated at all tests, for example, pressure test and flexural test. 40% substitution gives least compressive strength, pliable and flexural strength with more decrease in load of cement.
- ✓ In any case, the strength of the substantial is relying upon the two factors for example measure of OPKS and relieving period.
- ✓ At long last, from the outcomes we can presume that 10% substitution test is considered as fractional lightweight cement, since its Density more than 2000kg/m³.
- ✓ 40% examples additionally consider full light weight concrete, yet the outcomes are not fulfilling so they considered as non-primary light weight concrete.

REFERENCES

- [1] Abdullah, A. A. A. (1984). Basic strength properties of lightweight concrete using agricultural wastes as aggregates, Proceedings of International Conference on Low-cost Housing for Developing Countries, Roorkee, India.
- [2] Abdullah, A. A. A. (1996). Palm oil shell aggregate for lightweight concrete. Waste material used in concrete manufacturing, Noyes Publication, pp. 624-636.
- [3] ACI 318 (1995). Building code requirements for structural concrete. American Concrete Institute.
- [4] ACI Committee 116 (ACI 116R-2000). Cement and Concrete Terminology. American Concrete Institute, armington Hills, Mich.,2000, 73 pp.
- [5] Alengaram, U.J., Jumaat, M.Z. and Mahmud, H. (2008). Influence of cementitious materials and aggregate content on compressive strength of palm kernel shell concrete. Journal of Applied Sciences, Vol. 8(18), pp. 3207-3213.
- [6] Alengaram, U. J., Mahmud, H., Jumaat, M. Z. and Shirazi, S. M. (2010). Effect of aggregate size and proportion on strength properties of palm kernel shell concrete. International Journal of Physical Science, Vol. 5(12), pp. 1848–1856.
- [7] Alengaram, U.J., Mahmud, H. and Jumaat, M.Z, (2011). Enhancement and prediction of modulus of elasticity of palm kernel shell concrete, Materials and Design, Vol. 32, pp. 2143-2148.
- [8] Alengaram, U.J., Abdullah, B A. M., and Jumaat, M. Z. (2013). Utilization of oil palm kernel shell as lightweight aggregate in concrete – A review. Construction and Building Materials, Vol. 38, pp. 161-172.
- [9] ASTM C33 (1999). Standard specification for concrete aggregates. USA: ASTM international. Babu, K. G. and Babu, D. S. (2003). Behaviour of lightweight expanded polystyrene concrete containing silica fume, Cement and Concrete Research, Vol. 33(5), pp. 755–762.
- [10] Basheer, L., Kropp, J., and Cleland, D.J. (2001). Assessment of the durability of concrete from its permeation properties: a review. Construction Building Material, 15(2-3):93–103.
- [11] Basri, H.B., Mannan, M.A. and Zain, M. F. M. (1999). Concrete using oil palm shells as aggregate. Cement and Concrete Research, Vol., 29(4), pp. 619-622.
- [12] BS 812 Part 2 (1995). Testing aggregates. Methods for determination of density. British Standards Institution, London, UK.
- [13] BS 812 Part 103 (1990). Testing aggregates. Methods for determination of particle size distribution. British Standards Institution, London, UK.

- [14] BS 882 (1992). Specification for aggregates from natural sources for concrete. British Standards Institution, London, UK.
- [15] BS 1377 Part 2 (1990). Classification tests. Methods of test for soils for civil engineering purposes. British Standards Institution, London, UK.
- [16] BS 1881 Part 102 (1983). Testing concrete. Method for determination of slump. British Standards Institution, London, UK.
- [17] BS 1881 Part 111 (1983). Testing concrete. Method of normal curing of test specimens. British Standards Institution, London, UK.
- [18] BS 1881 Part 115 (1983). Testing concrete. Specification for compression testing machines for concrete. British Standards Institution, London, UK.76
- [19] BS 1881 Part 116 (1983). Testing concrete. Method for determination of compressive strength of concrete cubes. British Standards Institution, London, UK.
- [20] BS 1881 Part 117 (1983). Testing concrete. Method for determination of tensile splitting strength. British Standards Institution, London, UK.
- [21] BS 1881 Part 122 (1983). Testing concrete. Method for determination of water absorption. British Standards Institution, London, UK.
- [22] BS 1881 Part 125 (1983). Testing concrete. Method for mixing and sampling fresh concrete in the laboratory. British Standards Institution, London, UK.
- [23] BS 5328 Part 1 (1997). Guide to specifying concrete. British Standards Institution, London, UK.